

# Time Pressure for Benchtop & Retrofit

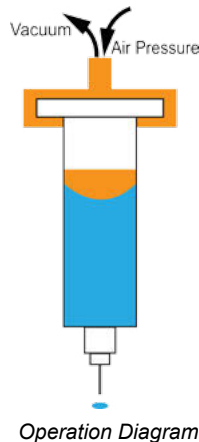
## for Simple Dispensing with Disposable Syringe

*Applications: Full Range of Fluid Viscosities*

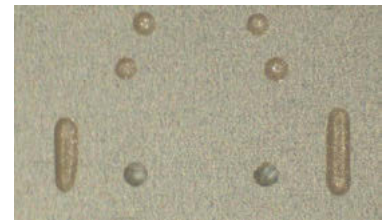
### Time Pressure Liquid Dispensing Pump

Works by applying pressure to the syringe. Simply attach the supplied syringe air cap and Luer dispense tip.

- Dispense lines, fills, and dots
- Great for short pot-life material
- Good choice for hand-held operations
- Suitable for wide range of fluid viscosities
- All wetted parts are disposable



*This is a great addition to fully automatic systems*



*Dots 0.011" (0.27 mm) of structural and electrical conductive adhesives dispensed by Time Pressure Liquid Dispensing Pump*

### Simple & Versatile Dispensing

Operator uses pulsed air to dispense volumes of fluid via two modes of operation:

- Pulsed Mode - operator activates footswitch or start button. Controller remains on for a programmed period of time.
- Start/Stop Mode - system continues to apply air to the reservoir until the operator removes the input signal.



### Advanced & Versatile Dispensing

Advanced Time Pressure FPC further enhances dispensing results:

- Consistent fluid flow to ensure accurate dispense result.
- User determines the dispense pressure set points and can program process pauses.
- Programmable Controller accommodates up to 30 programs.



# Time Pressure for Bench Top & Retrofit

## Integrate a Time Pressure System into Benchtop or Automated Dispense System

Integrate the Time Pressure Liquid Dispensing Pump into a fully automated Liquid Dispense Systems or a compact Benchtop equipment.



Monitor your Time Pressure Dispensing Pump with either a simple & versatile controller or an advanced FPC controller.

Time Pressure Liquid Dispensing Pump on Benchtop Dispenser and automated platform environments.

## Specifications for Time Pressure Dispensing Pump

TIME PRESSURE DISPENSING PUMP	
Syringe Compatibility	EFD or Semco: 5 cc, 10 cc, 30 cc
Dispense Tips	GPD S Type Luer or other Luer nozzles
Viscosity Range	1 to 100,000+ cps. Consult GPD Global for details.
Pressure Range	1 to 80 psi
Minimum Pulse Time	0.030 s

## Real Time Fluid Pressure Control (FPC)

Further enhance Time Pressure dispensing results with **Advanced Time Pressure FPC** (Fluid Pressure Control):

- Consistent fluid flow to ensure accurate dispense result.
- User determines the dispense pressure set points and can program process pauses.
- Programmable Controller accommodates up to 30 programs.

For more FPC advantages, refer to Real Time Process Control with FPC, and watch solder mask dispensed via Time Pressure syringe and Real Time Process Control with FPC.



[www.accelonix.nl](http://www.accelonix.nl) • [sales@accelonix.nl](mailto:sales@accelonix.nl)

Rev Mar 2019

**Accelonix BV**  
 Luchthavenweg 18b • NL-5657 EB •  
 Eindhoven • The Netherlands •  
 T: +31 40 750 1650 • E: [info@accelonix.nl](mailto:info@accelonix.nl)