

# Super Jet 2



**NEW**

**Pursuit of  
high reliability •  
high quality**

**Ultra high speed**

**Max: 1,200Hz**

\*In full continuous dispensing operation: 500Hz

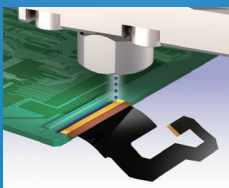
**Ultra-trace**

**0.5nL/shot~**

**Productivity**

**High throughput**

## Dispensing application



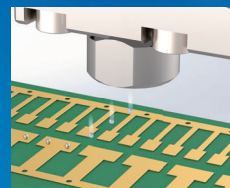
TAB reinforcement  
on LCM



UV dispensing on  
camera module



Vibrating membrane  
attach on speaker



Ag dispensing on  
semiconductor  
lead frame



Example on FA equipment

**Our products, please contact us ▼**

<https://www.musashi-engineering.co.jp.e.cn.hp.transer.com>

**Scan for our latest product movie**



# Pursuing better convenience. New product!! with customer feedback

## **NEW1** Various and easy maintenance

3 types of wet section are prepared. Every type of syringe is available.

### **1 Disposable type**

(Musashi / other brand syringe available)



### **2 SUS type**

(Musashi syringe available)



### **3 SUS type**

(Other brand syringe available)



## **NEW2**

### Using One-touch connector

Connector is minimized and detachable.



## Dispense head

## **NEW3**

### Material check window

Permit to capture a leaking fluid and timing for changing consumable sealing parts.

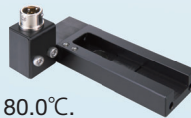
## **NEW4**

### Possible to change rod by customer

Maintainability is improved.

Fluid temp control by external type.

Enable to adjust up to 80.0°C.



## **NEW5**

### No need any dedicated power supply box

Capable of running with DC24V from host equipment.



## Head controller

## **NEW6**

Selectable rod operation mode based on material characteristic.

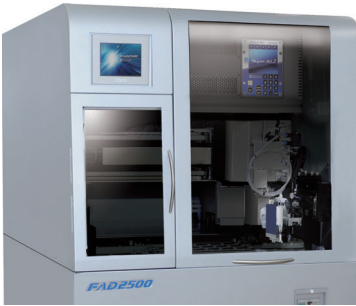
- 3.5 inch, large color screen.
- Numeric keypad on front panel.
- Equipped with a memory function for dispensing parameters.



## Mounting on desktop robot



## On FA equipment



Rack-mounting is available.  
(19 inch Subrack, 3U x 21HP)

Host system is able to handle operation and all parameter send and receive through USB/RS-232C.

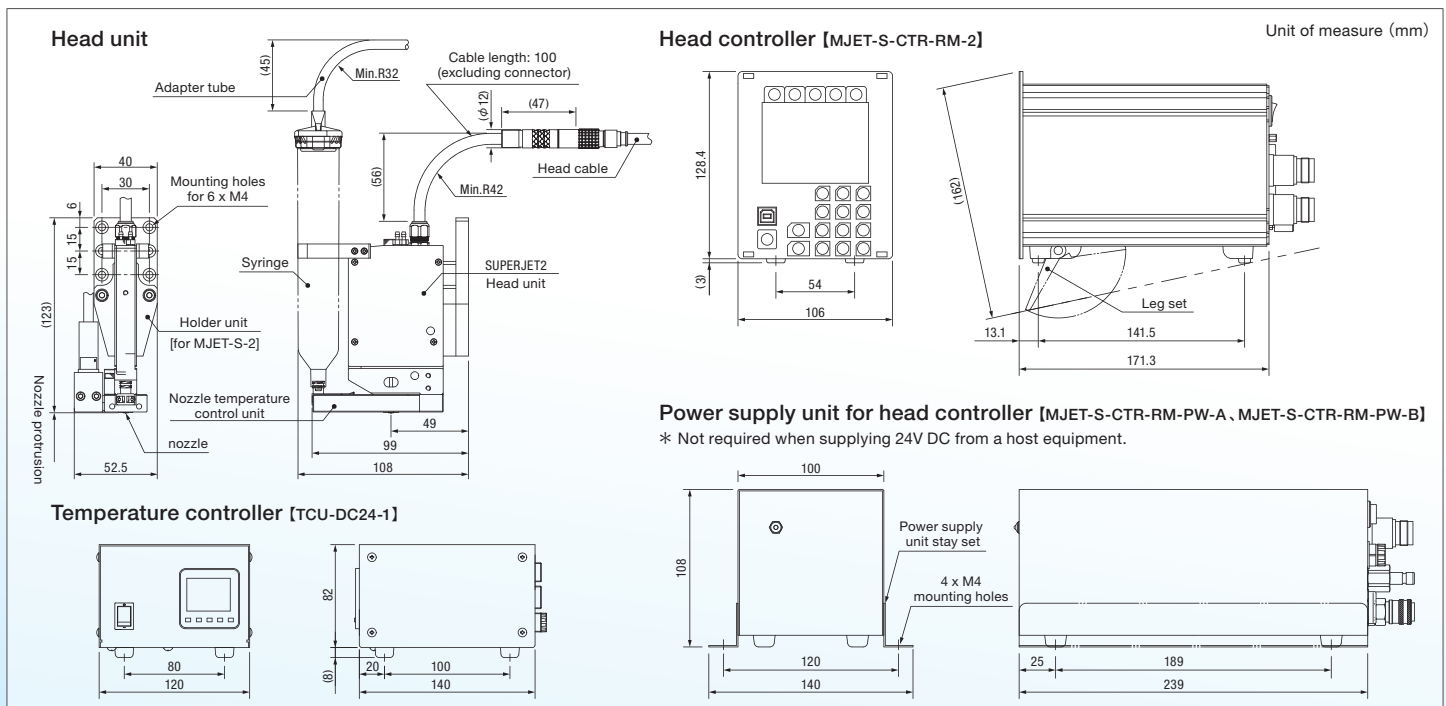
## specification

SuperJet2 head unit						
Model	MJET-S-2-HU-MW-M	MJET-S-2-HU-MW-L	MJET-S-2-HU-M-M	MJET-S-2-HU-M-L	MJET-S-2-HU-W-M	MJET-S-2-HU-W-L
Fluid transfer unit model	MJET-S-2-MW		MJET-S-2-M		MJET-S-2-W	
Rod set model	MJET-S-ROD-SET-M-2	MJET-S-ROD-SET-L-2	MJET-S-ROD-SET-M-2	MJET-S-ROD-SET-L-2	MJET-S-ROD-SET-M-2	MJET-S-ROD-SET-L-2
Dispensing method	Jet method					
Maximum operating frequency	1,200 Hz *In full continuous dispensing operation: 500 Hz					
Applicable fluid material	UF material, Ag paste, encapsulant, epoxy resin, grease, etc.					
Applicable fluid material viscosity	50~300,000 mPa·s (Reference value)					
Fluid material supply method	Syringe (for 5 to 70 mL)					
Allowable fluid feed pressure	Up to 0.500 MPa					
Allowable fluid feed part temperature	Up to 60°C			Up to 80°C		
Applicable nozzle	Dedicated nozzle 27G、28G、30G、31G、33G、38G					
Conformity standard	EU RoHS2, CE marking (Low Voltage Directive, EMC Directive)					
Weight	0.4kg (Including cable and connector Excluding fluid material and material container)					

Head controller		
Model	MJET-S-CTR-RM-2	
Power supply unit	MJET-S-CTR-RM-PW-A	MJET-S-CTR-RM-PW-B
control method	Microcomputer digital control method	
Display	3.5 inch color graphic LCD	
Fluid feed pressure setting range	0.010 ~ 0.500 MPa Please set pressure following the capacity of host equipment or fluid container.	—
Supply air pressure	Up to 0.700 MPa Recommended supply pressure: Fluid feeding pressure + 0.100MPa or more	—
Dispense mode	LINE/MAN、LINE/SET、DOT/MAN、DOT/SET	
Number of channels	100 CH	
Other functions	Multi-preset, synchro speed, RS-232C communication, Japanese-English-Chinese display switching	
Rated voltage and frequency	AC100-240 V, 50/60 Hz	
power consumption	75 W (When operating at 500 Hz)	
Head controller mounting standard	19 inch Subrack (IEC60297-3、DIN41494)、3U×21HP	
Conformity standard	EU RoHS2, CE marking (Low Voltage Directive, EMC Directive)	
Weight	Head controller	1.6 kg
	Power supply unit	2.0 kg

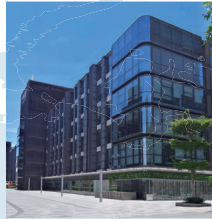
Temperature controller	
Model	TCU-DC24-1
Rated voltage and frequency	AC100-240 V, 50/60 Hz
power consumption	68 W
Weight	1.0 kg

## External dimensions





Germany



Shenzhen



Shanghai



Suzhou



Tianjin

# Global support for

# MUSASHI worldwide

MUSASHI'S GLOBAL SUPPORT



Tokyo Head Office



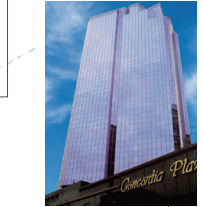
Thailand



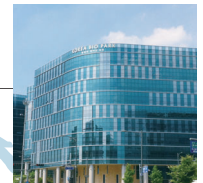
Singapore



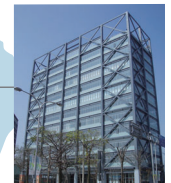
Indonesia



Hong Kong




Korea



Taiwan

Tokyo  
(Head Office)

 **Safety precautions**  
Please read the instruction manual carefully before use to ensure correct and safe usage.

\*These specifications are subject to change without any notice.  
\*The copyright of this catalog belongs to our company. Reproduction and distribution of the pictures, illustrations and any other information in this catalog to any other media without prior written permission are strictly prohibited; doing so will result in copyright infringement.

MUSASHI ENGINEERING, INC. (headquarters) is certified and registered according to the ISO 9001 Quality Management System and the ISO 14001 Environmental Management System.



Accelonix BV ■ Luchthavenweg 18-b ■ NL-5657 EB Eindhoven  
www.accelonix.nl ■ info@accelonix.nl ■ Tel.+31-40-7501650