

The MILMEGA '80RF' Series Solid State Amplifier Range

Model: 80RF1000-1200 Broadband Amplifier

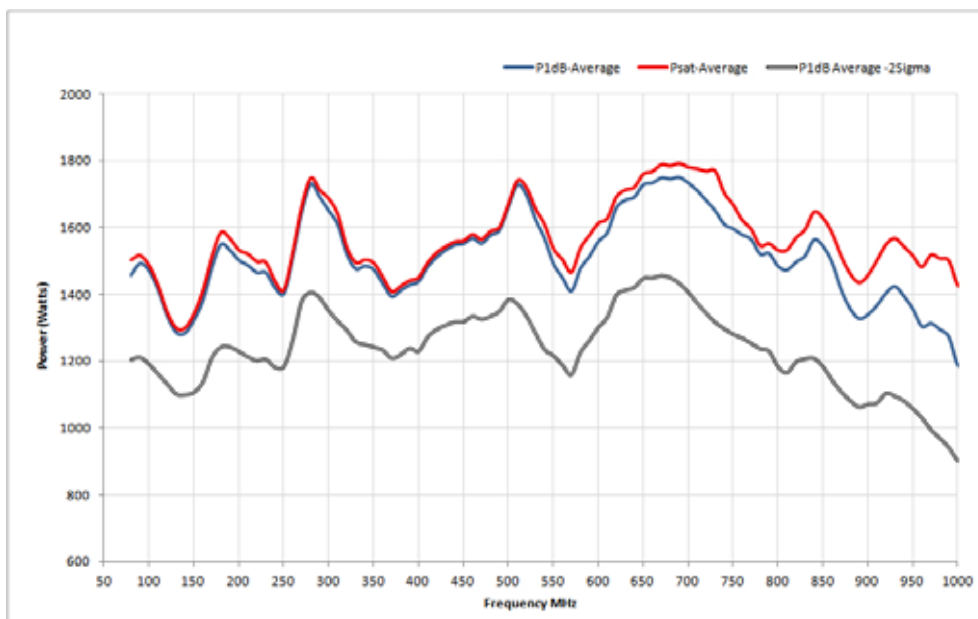


- Colour led bar graph displays on the front panel giving an indication of incident and reflected power.
- GPIB, RS232, USB and Ethernet remote fitted as standard.
- Unique 5 year parts and labour warranty on all MILMEGA amplifiers.

The 80RF series of solid state power amplifiers follows the MILMEGA tradition for compact, upgradeable microwave power amplifier solutions with field proven reliability. Developed to cover the frequency band 80 - 1000 MHz in a single band.

Designed specifically for EMC testing this mismatch tolerant amplifier delivers continuous power into a poor and variable match typically associated with EMC antenna.

The amplifier, which consists of three 80RF1000-300 sub sections which can be used individually if required, is designed with upgradability in mind. If more power is required this amplifier can be integrated with further additional units to achieve power levels of 1200W P1dB.



Amplifier Specification

80 to 800 MHz	<i>Minimum Psat</i>	<i>Minimum P1dB</i>
Power	1230 W	1100 W
800 to 1000 MHz		
Power	1200 W	900 W

<i>System Parameters</i>	<i>Nominal</i>	<i>Minimum</i>	<i>Maximum</i>
Harmonics at P1dB	-20 dBc		-15dBm
Gain	62 dB	56dB	70dB
Gain variation with frequency			+/- 3.5 dB
Noise figure	10.0 dB		
Input Power (no damage)			+15 dBm
Output VSWR tolerance	Infinite any phase		
Stability	Unconditional		
Output impedance	50 Ohm		
Output VSWR	2:1		
Input VSWR			2:1
Third order intercept point IP3	8dB > P1dB		
Spurious	-80 dBc		
Safety interlock	Via rear panel D-sub connector		
Supply Voltage - 3 Phase	Delta or Star		
Supply Frequency	47 to 63 Hz		
Supply Power	6.2 kVA (typical full power)		
RF Input	Type N female		
RF Output	7/16 female		
Dimension	19 inch, 18U case, 780mm Deep		
Weight	195 kg		

Amplifiers that meet today's and tomorrow's needs through upgradability. Amplifiers in this family include the 80RF1000-175, 80RF1000-300, 80RF1000-600 and 80RF1000-800 with the MILMEGA Modularity, Upgrade path and 5 Year Warranty.

Note 1: Upgrade is only possible up to the highest power model currently available



Accelonix BV
 Luchthavenweg 18b • NL-5657 EB •
 Eindhoven • The Netherlands •
 T: +31 40 750 1650 • E: info@accelonix.nl



RF/Microwave Amplifiers

Specifications subject to change without notice. MILMEGA is an ISO accredited Company. Products are designed and manufactured under strict quality and environmental requirements of ISO 9001.

MILMEGA Limited Park Road, Ryde, Isle of Wight PO33 2BE United Kingdom
 Tel. +44 (0) 1983 618004 Fax. +44 (0) 1983 811521 sales@milmega.co.uk www.milmega.co.uk