

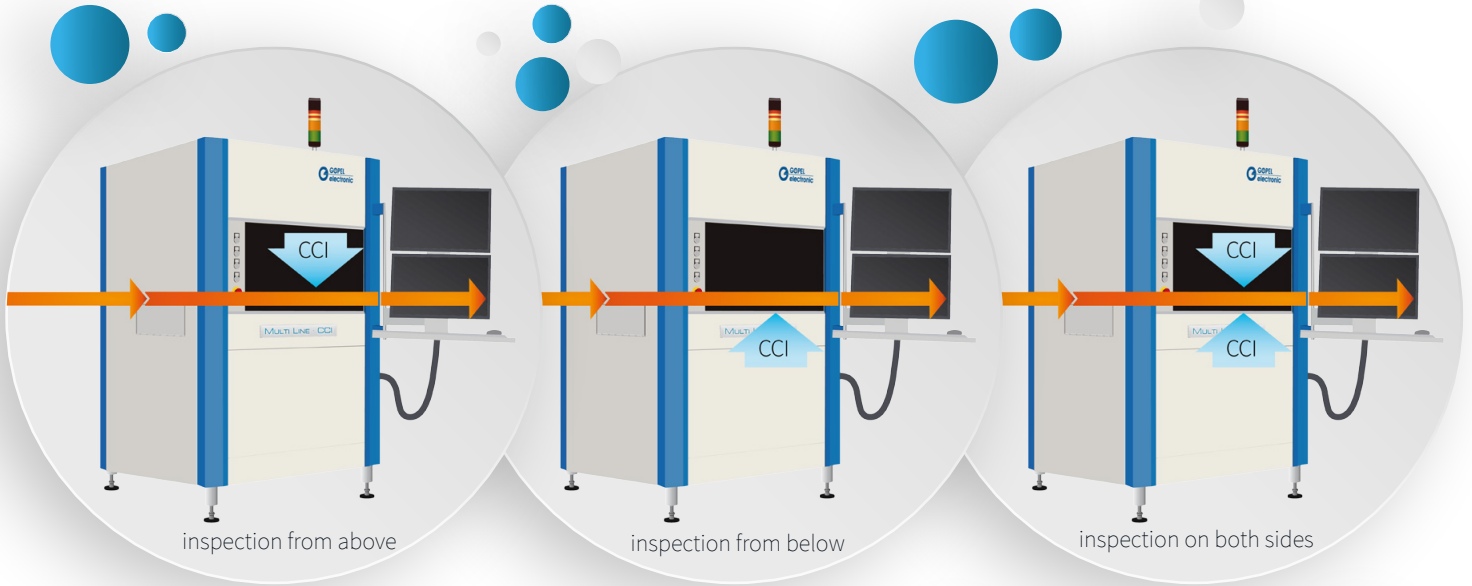


# Multi Line CCI Conformal Coat Inspection



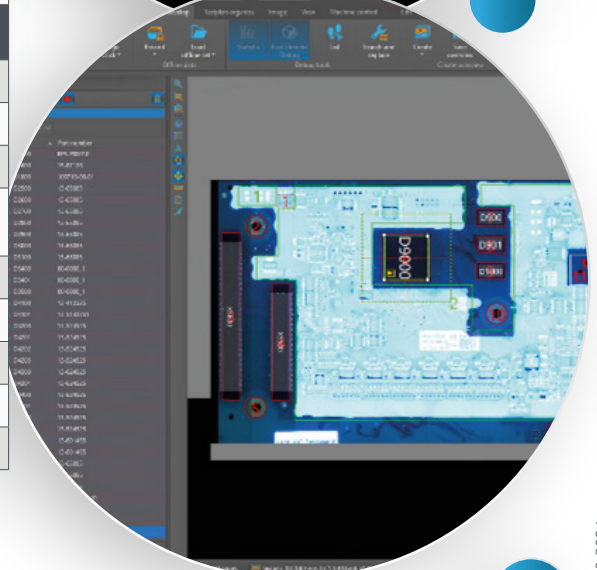
- inspection of missing or defective protective coating
- wet or dry testing
- Conformal Coat Inspection of both sides in one system
- optional lower Return Conveyor
- UV LED illumination from several directions
- test program generation in just a few minutes based on the coating plan
- flexible data interfaces for MES and traceability





Parameters	Data
scope of testing	insufficient coating, excessive coating, bubbles, cracks, splashes, smudges
camera	color camera
objective	telecentric
x-y resolution	25 µm
illumination	Top: UV + white, side: UV + red
clearance above PCBA	80 mm
clearance below PCBA	40 mm
inspection of both sides	yes, configurable
data import	Gerber data import (RS-274-X, RS-274-D), CAD, ODB++, coating plan
test program generation	typically <15 min

Multi Line platform	
max. inspection area	540 mm x 450 mm
max. carrier size	up to 620 mm x 510 mm
max. transport weight	15 kg
energy requirement	230 VAC / 2 kVA, compressed air 6 bar, consumption < 20 l/h
transport system	conveyor belt for PCBA with or without carriers
transport direction	left-right, right-left, left-left, right-right
inline interface	SMEMA, HERMES, Siemens, Sensor
dimensions (w x d x h)	1150 mm x 1300 mm x 1800 mm
weight	ca. 800 kg



**Accelonix BV**  
 Luchthavenweg 18b • NL-5657 EB •  
 Eindhoven • The Netherlands •  
 T: +31 40 750 1650 • E: info@accelonix.nl