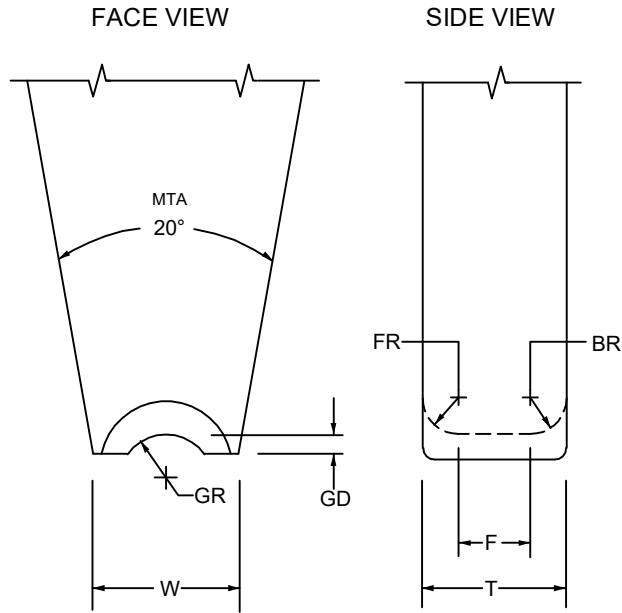


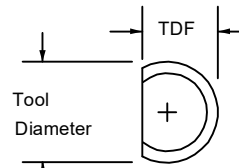
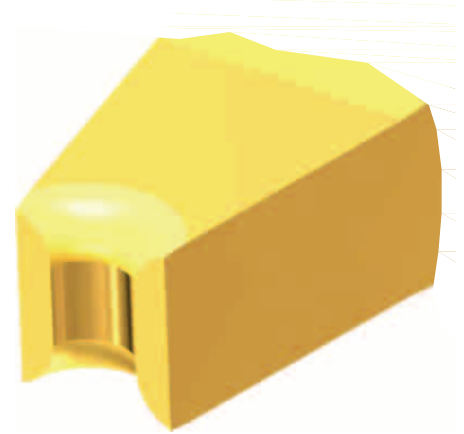
SERIES G

LARGE WIRE, U GROOVE

FOR MANUAL, AUTOMATIC AND SEMI-AUTOMATIC BONDERS



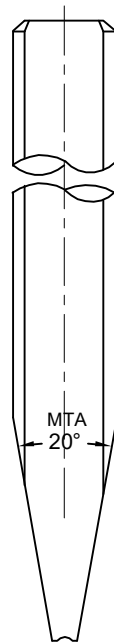
MTA = MAIN TAPER ANGLE
SA = SIDE-VIEW ANGLE
BA = BACK ANGLE
FA = FRONT ANGLE



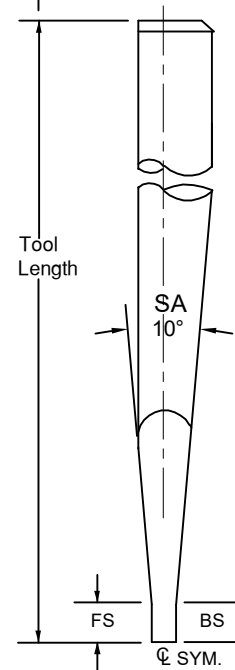
TDF" To be determined according to the "T" size

| | TD | | TDF | |
|------|-------|------|-------|------|
| | inch | mm | inch | mm |
| 1/16 | .0624 | 1.58 | .0460 | 1.17 |
| 1/16 | .0624 | 1.58 | .0590 | 1.50 |
| 3/32 | .0784 | 1.99 | .0630 | 1.60 |
| | .0937 | 2.38 | .0880 | 2.24 |
| 1/8 | .1180 | 3.00 | .0985 | 2.50 |
| | .1249 | 3.17 | .0937 | 2.38 |
| 1/8 | .1249 | 3.17 | .1100 | 2.79 |
| 1/8 | .1249 | 3.17 | .1180 | 3.00 |

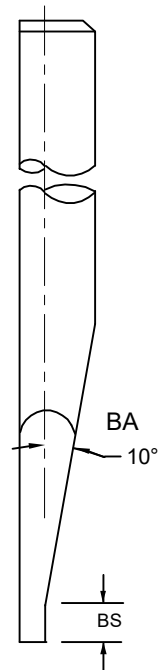
Standard Front Step and Back Step supplied unless otherwise specified. See **Tool Options** for other options. (A4, A5)



FACE VIEW



SIDE VIEW
CENTER LINE
(S=Standard)



SIDE VIEW
'C' STYLE
(O=Optional)

SERIES G

U-GROOVE IN WIRE DIRECTION
LARGE WIRE

ORDERING INFORMATION
LARGE WIRE BONDING WEDGES
FOR GOLD AND ALUMINUM WIRE

SAMPLE PART NUMBER: **M-S-G-100-1-1/8-1.97-M-***

SYMBOL EXPLANATION: 1 2 3 4 5 6 7

1. **MATERIAL:**
 - M = Ceramic
 - C = Tungsten Carbide
 - T = Titanium
 - All other: See Material Selection
2. **S=** Standard, Center line
O = Optional, C Style
3. **PART NUMBER :** G
Wire Ø (100 in µ) and Revision Number (1)
4. **SHANK DIA.:** Please Specify Length
Select TD from chart on page
5. **TOOL LENGTH:**
Please Specify Length
6. **FOOT FINISH:**
 - M = Matte finish (FR, BR, & Bond Flat)
 - P = Polish finish (FR, BR, & Bond Flat)
 - MP= Polish finish (FR, BR), and Matte finish (Bond Flat)
7. See Tool Options

| STANDARD CHART | | G LARGE WIRE: FOR WIRE DIAMETERS .0040" THROUGH .0200" | | | | | | | | | | | | | | | | |
|-----------------------|-------|--|--------|-----|--------|-----|--------|-----|--------|-----|---------|------|--------|------|--------|------|-------|-----|
| PART NUMBER | F | | FR | | BR | | GR | | GD | | FS & BS | | T | | W | | WD | |
| Units | in. | µ | µ | µ | in. | µ | in. | µ | in. | µ | in. | µ | in. | µ | in. | µ | in. | µ |
| Tolerance small Tools | (Ref) | | ±.0002 | ±5 | ±.0002 | ±5 | ±.0002 | ±5 | ±.0002 | ±5 | ±.0004 | ±10 | ±.0004 | ±10 | ±.0004 | ±10 | | |
| G-100-1 | .0051 | 130 | | | | | | | | | | | .0098 | 249 | | | | |
| G-100-2 | .0057 | 145 | .0024 | 61 | .0024 | 61 | .0024 | 61 | .0016 | 41 | .0390 | 991 | .0104 | 264 | .0098 | 249 | .0040 | 102 |
| G-100-3 | .0063 | 160 | | | | | | | | | | | .0110 | 279 | | | | |
| G-100-4 | .0071 | 180 | | | | | | | | | | | .0118 | 300 | | | | |
| G-125-1 | .0059 | 150 | | | | | | | | | | | .0118 | 300 | | | | |
| G-125-2 | .0069 | 175 | .0030 | 76 | .0030 | 76 | .0030 | 76 | .0020 | 51 | .0390 | 991 | .0128 | 325 | .0118 | 300 | .0050 | 127 |
| G-125-3 | .0079 | 201 | | | | | | | | | | | .0138 | 351 | | | | |
| G-125-4 | .0089 | 226 | | | | | | | | | | | .0148 | 376 | | | | |
| G-150-1 | .0067 | 170 | | | | | | | | | | | .0138 | 351 | | | | |
| G-150-2 | .0077 | 196 | .0035 | 89 | .0035 | 89 | .0035 | 89 | .0024 | 61 | .0390 | 991 | .0148 | 376 | .0138 | 351 | .0060 | 152 |
| G-150-3 | .0091 | 231 | | | | | | | | | | | .0161 | 409 | | | | |
| G-150-4 | .0106 | 269 | | | | | | | | | | | .0177 | 450 | | | | |
| G-175-1 | .0075 | 191 | | | | | | | | | | | .0157 | 399 | | | | |
| G-175-2 | .0091 | 231 | .0041 | 104 | .0041 | 104 | .0041 | 104 | .0028 | 71 | .0390 | 991 | .0173 | 439 | .0157 | 399 | .0070 | 178 |
| G-175-3 | .0106 | 269 | | | | | | | | | | | .0189 | 480 | | | | |
| G-175-4 | .0124 | 315 | | | | | | | | | | | .0207 | 526 | | | | |
| G-200-1 | .0083 | 211 | | | | | | | | | | | .0177 | 450 | | | | |
| G-200-2 | .0102 | 259 | .0047 | 119 | .0047 | 119 | .0047 | 119 | .0031 | 79 | .0390 | 991 | .0197 | 500 | .0197 | 500 | .0080 | 203 |
| G-200-3 | .0122 | 310 | | | | | | | | | | | .0217 | 551 | | | | |
| G-200-4 | .0142 | 361 | | | | | | | | | | | .0236 | 599 | | | | |
| G-250-1 | .0098 | 249 | | | | | | | | | | | .0217 | 551 | | | | |
| G-250-2 | .0130 | 330 | .0059 | 150 | .0059 | 150 | .0059 | 150 | .0039 | 99 | .0590 | 1499 | .0248 | 630 | .0217 | 551 | .0100 | 254 |
| G-250-3 | .0150 | 381 | | | | | | | | | | | .0268 | 681 | | | | |
| G-250-4 | .0177 | 450 | | | | | | | | | | | .0295 | 749 | | | | |
| G-300-1 | .0114 | 290 | | | | | | | | | | | .0256 | 650 | | | | |
| G-300-2 | .0154 | 391 | .0071 | 180 | .0071 | 180 | .0071 | 180 | .0047 | 119 | .0590 | 1499 | .0295 | 749 | .0236 | 599 | .0120 | 305 |
| G-300-3 | .0181 | 460 | | | | | | | | | | | .0323 | 820 | | | | |
| G-300-4 | .0213 | 541 | | | | | | | | | | | .0354 | 899 | | | | |
| G-350-1 | .0134 | 340 | | | | | | | | | | | .0300 | 762 | | | | |
| G-350-2 | .0177 | 450 | .0083 | 211 | .0083 | 211 | .0083 | 211 | .0055 | 140 | .0590 | 1499 | .0343 | 871 | .0276 | 701 | .0140 | 356 |
| G-350-3 | .0213 | 541 | | | | | | | | | | | .0378 | 960 | | | | |
| G-350-4 | .0248 | 630 | | | | | | | | | | | .0413 | 1049 | | | | |
| G-400-1 | .0150 | 381 | | | | | | | | | | | .0339 | 861 | | | | |
| G-400-2 | .0205 | 521 | .0095 | 241 | .0095 | 241 | .0095 | 241 | .0063 | 160 | .0590 | 1499 | .0394 | 1001 | .0315 | 800 | .0160 | 406 |
| G-400-3 | .0244 | 620 | | | | | | | | | | | .0433 | 1100 | | | | |
| G-400-4* | .0283 | 719 | | | | | | | | | | | .0472 | 1199 | | | | |
| G-450-1 | .0177 | 450 | | | | | | | | | | | .0390 | 991 | | | | |
| G-450-2* | .0230 | 584 | .0106 | 269 | .0106 | 269 | .0106 | 269 | .0071 | 180 | .0590 | 1499 | .0445 | 1130 | .0354 | 899 | .0180 | 457 |
| G-450-3* | .0272 | 691 | | | | | | | | | | | .0484 | 1229 | | | | |
| G-450-4* | .0319 | 810 | | | | | | | | | | | .0531 | 1349 | | | | |
| G-500-1 | .0197 | 500 | | | | | | | | | | | .0433 | 1100 | | | | |
| G-500-2* | .0256 | 650 | .0118 | 300 | .0118 | 300 | .0118 | 300 | .0079 | 201 | .0590 | 1499 | .0492 | 1250 | .0394 | 1001 | .0200 | 508 |
| G-500-3* | .0303 | 770 | | | | | | | | | | | .0539 | 1369 | | | | |
| G-500-4* | .0355 | 902 | | | | | | | | | | | .0591 | 1501 | | | | |

* = Must be "C" Style *Other sizes available upon request *All dimensions and tolerances are for reference only

WIRE DIAMETER =WD