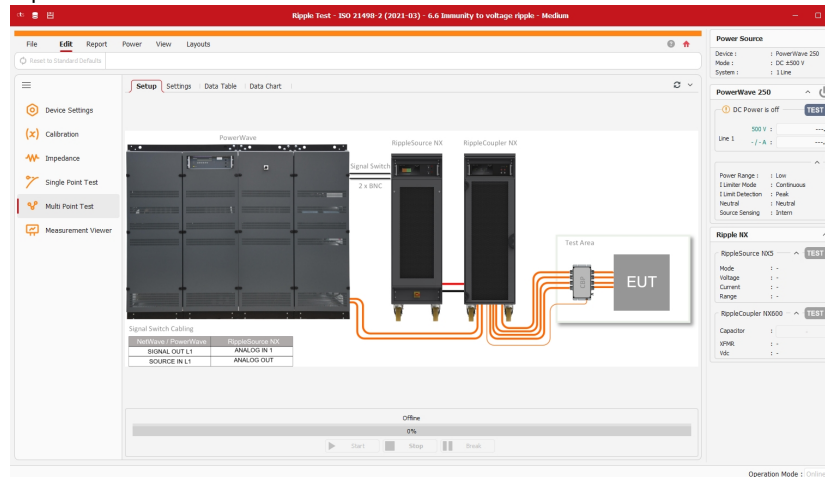


MAIN FEATURES

- Setup and control the Ripple NX
- Large library with pre-programmed ripple tests
- Easy create and modify test plans
- Multi Point tests
- Perform impedance measurements
- Integrated test report generator
- Combine with NetWave/PowerWave

CTS 23 - Ripple Testing Compliance Test Studio

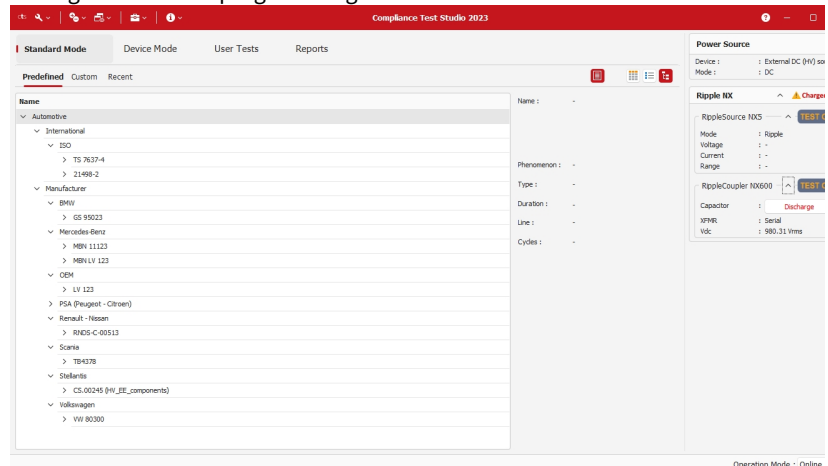
Compliance Test Studio 23 for Ripple NX extends the functionality and makes setup even easier. Remotely control your Ripple NX ripple generator, load a pre-programmed test from the large standard library and perform tests with ease. Analyze the impedance and ripple test data and generate comprehensive test reports for documentation.



The integrated setup screens make system setup easy, quick and prevents connection errors. Be always up to date about the status of the device and get access to the most important settings through the status area on the right hand side.

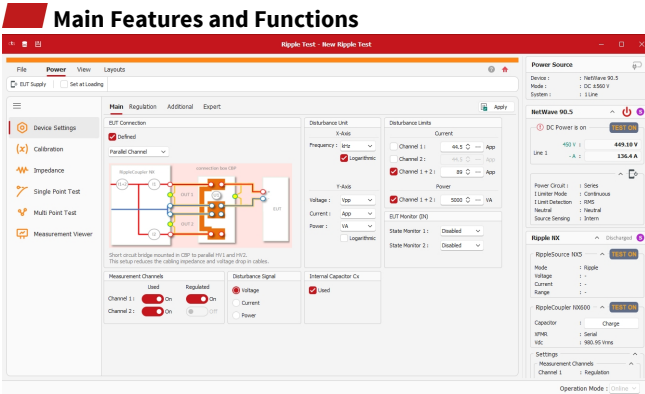
Standard Library with pre-programmed tests

Increase your efficiency by using the extensive test library. Spend time with testing and not with programming.



Using the standards library for testing is a convenient way to get started quickly. Select one of the pre-programmed tests, adjust the basic settings and start the test. The library for the Ripple NX covers international automotive standards (e.g. ISO 21498-2 and ISO 7637-4, CTS.Automotive-INTL license required), as well as many OEM standards (e.g. Stellantis, Volkswagen, Mercedes etc., CTS.Automotive-MFC license required).

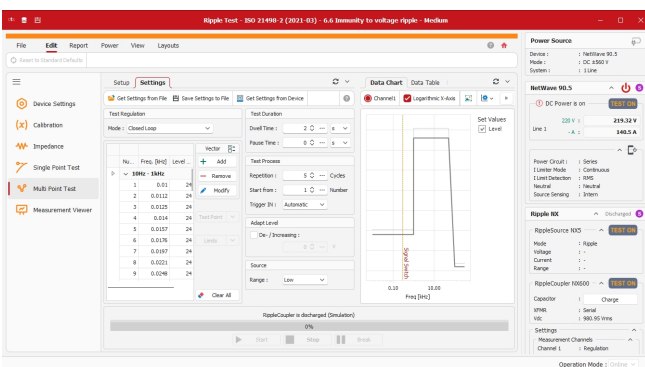
Pre-programmed tests can be modified and save in the "Custom" area of the library. This allows you to build up your own library with tests tuned to your test requirements.



The software guides you efficiently through the setup and use of the Ripple NX.

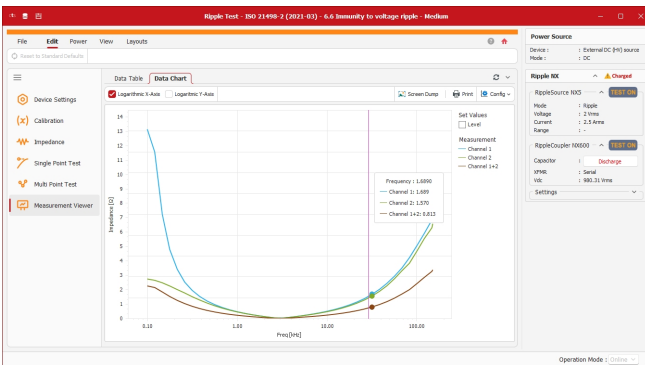
The device settings screen supports selecting configurations (single, dual, parallel) that show EUT and connection box wiring. With the programmable disturbance limiters, the injected ripple current can be limited according to EUT specifications or standards requirement.

The impedance mode is a quick way to determine the impedance curve of the EUT. This serves as an initial "fingerprint" before the actual ripple test and allows to identify changes of the EUT, e.g. shift of resonance points.



The editor for ripple Multi Point tests helps with the programming of test plans. Start by loading the test points from the standards library or define your own. The ripple levels, frequency step and disturbance limiters can be edited and the curve checked in the graph. Complete the setup by changing the dwell time and adjust the pause time between test points. Previously programmed tests can be loaded and .csv files can be imported.

Once the test is started, the actual test set points and measurement values (voltage, current and power per channel) are shown to always give you the overview about the actual status of both the test and the hardware.



With the Measurement Viewer the test data can be conveniently viewed and analyzed. The impedance graph helps to identify resonance frequencies and detect anomalies.

The integrated Report Generator (CTS.ExtFunctions license required) allows to generate comprehensive reports that include not only test data as tables and graphs. But also company, customer, environmental and EUT data for full transparency. Various output formats (PDF, DOCX, RTF, XLSX etc.) are supported. Generated reports are saved in the software for later recall, editing and re-generation.

Available Licenses

License	Description
CTS.DeviceRipple	Enables the Device Mode to remotely control the Ripple NX to program user tests, one license per connected device required, see application specific datasheet for details
CTS.ExtFunctions	Extended features including report, link, flowchart, measuring instruments, iteration, interlink, import and export of test data, requires a device license
CTS.Automotive-INTL	Library with pre-programmed tests for automotive international standards (e.g. ISO), valid for all licensed devices
CTS.Automotive-MFR	Library with pre-programmed tests for automotive OEM/manufacturer standards (e.g. Stellantis, Volkswagen, Mercedes, etc.), special licenses for Nissan and Renault on request, valid for all licensed devices

Supported Devices

Devices	
	Ripple NX200-1000-2.5, Ripple NX400-1000-2.5 Ripple NX600-1000-5, Ripple NX1000-1000-5, Ripple NX1000-1000-10

