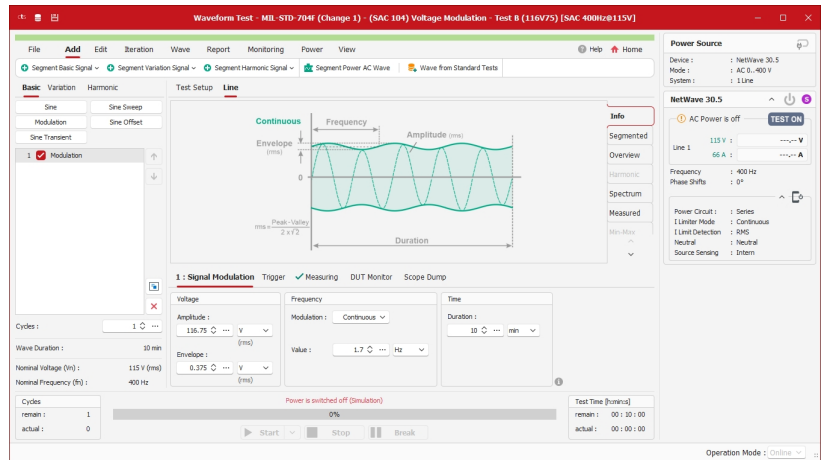


## CTS 23 - Military Standards Testing Compliance Test Studio

Compliance Test Studio 23 for Military Standards Testing is a comprehensive and easy to use software to perform military tests with a NetWave with NWB and AMP 200N2. The extensive standards library includes pre-programmed tests for MIL-STD 461, MIL-STD 704, MIL-STD 1275, GJB 181 and others. It is the ideal tool for compliance testing as well as tests part of the product development or validation process.

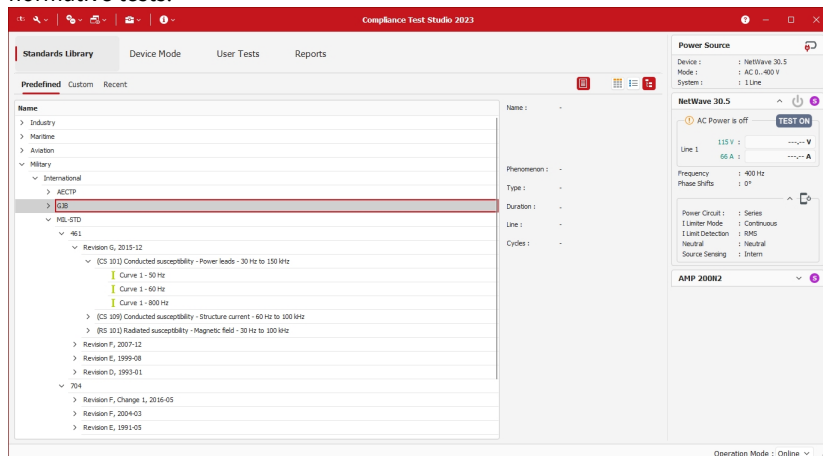
### MAIN FEATURES

- Military standards compliance testing
- MIL STD 461 CS 101, CS 109 and RS 101
- MIL-STD 704 LDC, HDC, SAC, SVF and SXF
- MIL-STD 127 Immunity Tests
- GJB 181 LDC, HDC, SAC, SVF and SXF
- Easy test report generation
- Integration of external instruments



### Efficient testing with Standards Library

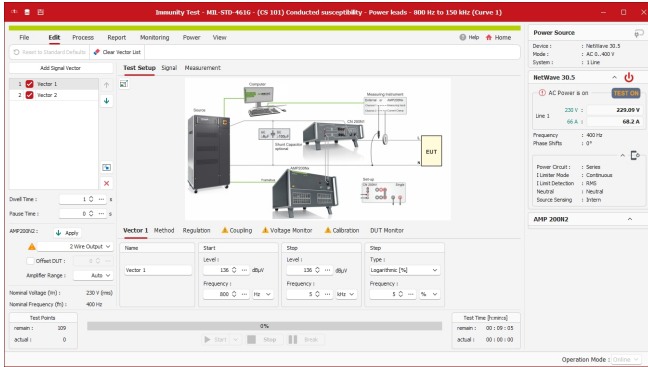
The extensive standards library for military testing includes thousands of pre-programmed tests. This allows also less experienced users to achieve fully normative tests.



Tests cover voltage variations with a NetWave (swells, dips, frequency changes, unbalance etc.), power analyzer measurements with option NWB (current consumption, power, power factor, inrush current, harmonics emissions etc.) and conducted susceptibility test (ripple on AC or DC) with an AMP 200N.

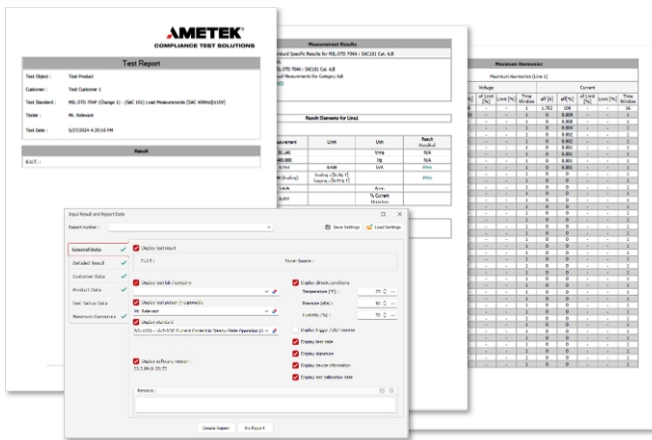
AMETEK CTS experts actively follow international standardization work. This ensures that always the latest changes are implemented and newest versions of standards are available. The software is regularly updated to keep track with changes in tests, conditions and functionalities.

**Main Features and Functions**



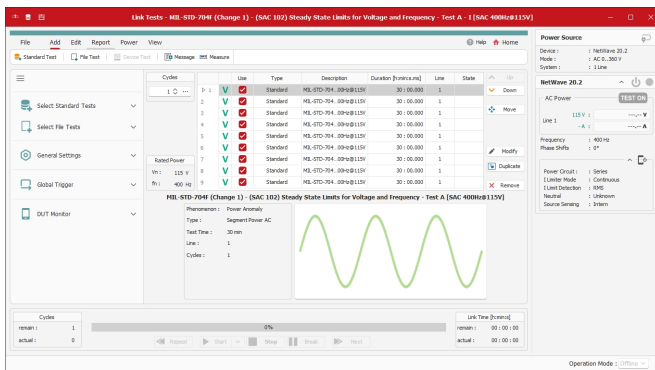
Unleash the full power of a NetWave power source, NWB power analyzer option and AMP 200Nx audio amplifier with the Compliance Test Studio 23 for aviation. The software supports you through the complete test procedure - from the setup to testing to reporting. Test setup images help to correctly configure the required devices and accessories according to the standards. An integrated help is available to understand and perform settings.

Tests can be loaded from the Standards Library or customized to your needs. All with the available waveform, measurement and immunity play editors.



Documentation is a required and important step in military testing. Compliance Test Studio supports with various functions for report generation: add customer information, test object data, test setup pictures and additional information. With the report editor the report content can be customized to create a meaningful report. Customize the test report template to include your company logo and address. Monitoring measurements and print screens of external instruments can also be added.

It is also possible to save the report within the Compliance Test Studio and reopen to modify. The report can be exported in various file formats which allows further processing and integration in overall test reports.



CTS.ExtFunctions license provides helpful tools to increase efficiency. Additional external instruments (e.g. multimeters, oscilloscopes, etc.) can be integrated and controlled by Compliance Test Studio software for monitoring and documentation of the applied signal and the EUT condition. The Link Test functions allows to compose complete test plans based on Standards Library and customized tests, combined with measurements from external instruments or react on EUT states via triggers. At the end, a combined test report for the complete test plan is created.

**Available Licenses**

| License         | Description  |
|-----------------|--|
| CTS.Military    | Library with pre-programmed tests for military standards (MIL-STD 461, MIL-STD 704, MIL-STD 1275, GJB 181 and others), valid for all licensed devices                    |
| CTS.ExtFunction | Extended features including report, link, flowchart, measuring instruments integration, iteration, interlink, import and export of test data , requires a device license |

**Supported Devices**

| Models |  |
|--------|--|
|        | NetWave 7.3 and all three phase NetWaves for supply voltage variations<br>Opt-1 NWB and Opt-3 NWB measurement boards for power analyser measurements<br>AMP 200Nx audio amplifiers for conducted susceptibility tests (ripple on AC or DC) |