



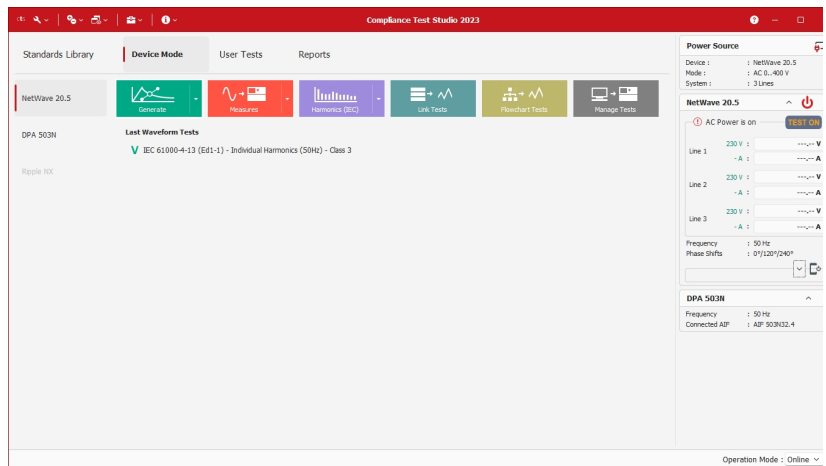
## MAIN FEATURES

- All-in one control, test and report software
- Extensive library with pre-programmed tests
- Easy test report generation
- Enhanced features to increase productivity
- Supports wide range of EM TEST and Teseq instruments
- Automotive, Industrial, Aerospace, Military

## CTS 23 - Compliance Test Studio

### Compliance Test Studio

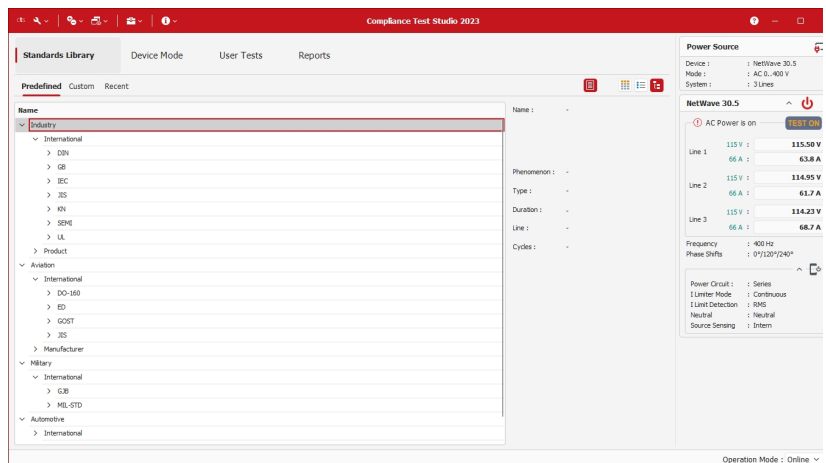
Unlock the power of efficiency with the Compliance Test Studio 23. Remotely control your EM TEST and Teseq conducted test equipment, load a pre-programmed test from the industry largest Standards Library and perform tests with ease. Analyze the test data and generate comprehensive test reports for documentation. The Compliance Test Studio 23 is the key to unlock the full potential of your EMC test equipment.



The clearly arranged home screen gives quick access to the various features and functions of the software. Always know the actual system state and get quick access to the most important settings through the status side-bar.

### Standard Library with pre-programmed tests

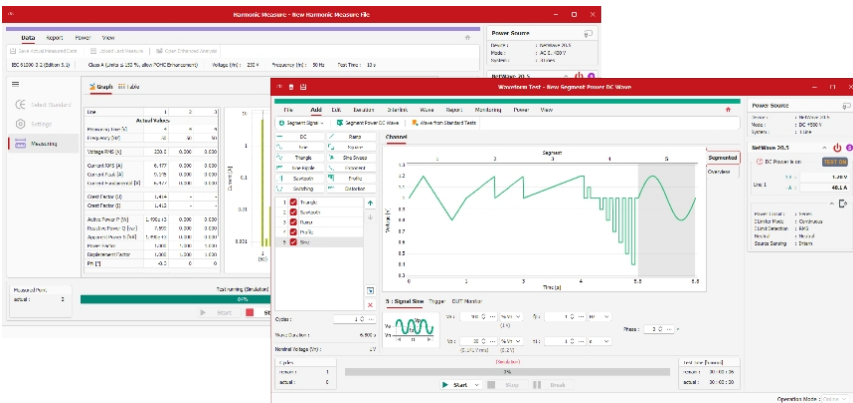
Increase your efficiency and use the extensive test library. Spend time with testing and not with programming.



The library includes tens of thousands of pre-programmed tests for a wide range of applications: Automotive (international and OEM/manufacturers), Industry (IEC, EN, DIN etc.), Aerospace (DO-160, Boeing, Airbus etc.), Military (MIL-STD 461, 704 etc.) and many other international and manufacturer standards. The pre-programmed tests can be easily edited to adjust for specific test requirements.

Buy what you need today and unlock additional library sections with licenses. Regular software updates are available to make sure you stay up to date with

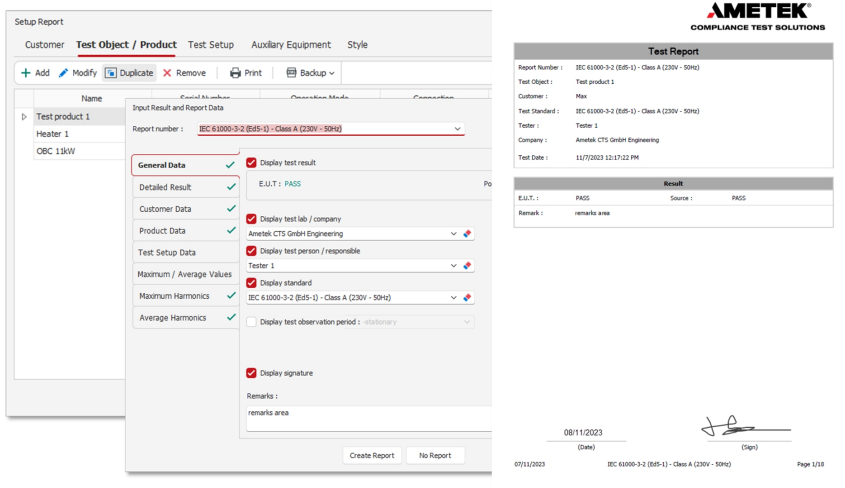
Device Mode - unleash the full performance of your test equipment



The Device Mode allows to remotely control the device and access to functionality beyond what is required by the standards. It gives full control to both the basic and advanced features.

Depending on the device configured, the available editors change. For sources and generators, use the device mode to program custom voltage profiles, configure pulse parameters and perform the tests.

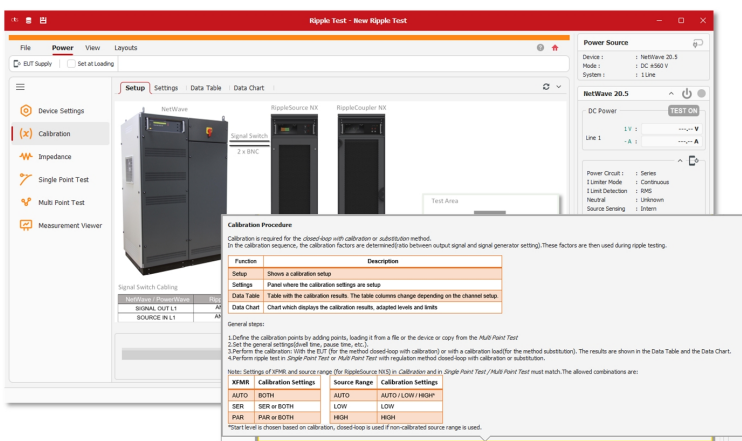
For measuring instruments like the DPA 500N, the Device Mode allows to perform tests according standards, customize measurement parameters and analyze the test results.



Documentation of the test results is an important step in testing. Compliance Test Studio supports with various functions for report generation: add customer, test object, test setup and additional information. With the report editor the report content can be customized to create a meaningful report. Customize the test report template to include your company logo and address.

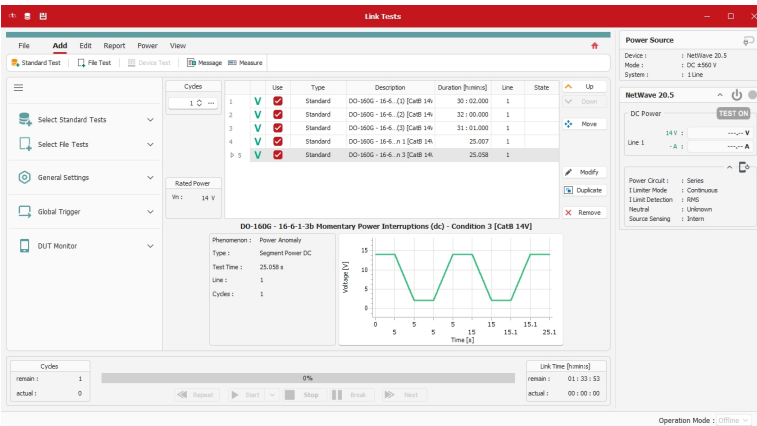
It is also possible to save the report within the Compliance Test Studio and reopen to modify. Several reports can be combined to generate an overall test report that includes all the EUT test data.

The report can be exported in various file formats (PDF, HTML, MHT, RTF, DOCX, XLS, XLSX, CSV, TXT or images) which allows further processing and integration in overall test reports.



Compliance Test Studio helps you to setup the devices and with the connection of the EUT and accessories by providing comprehensive test setup images. This reduces setup errors and ensures that the test is correctly performed as defined by the standards. The test setup images can be customized for customer specific setups. Help is available through the integrated help function. Comprehensive information is shown and features explained - no need to look up the information in the manual.

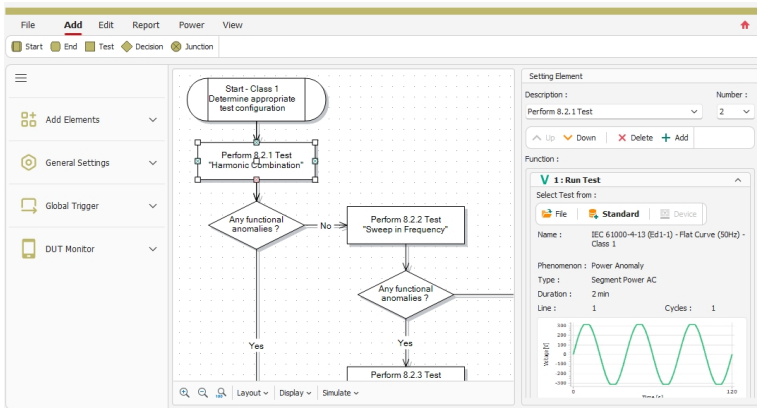
**Link Test - define complete test plans** (requires license CTS.ExtFunctions)



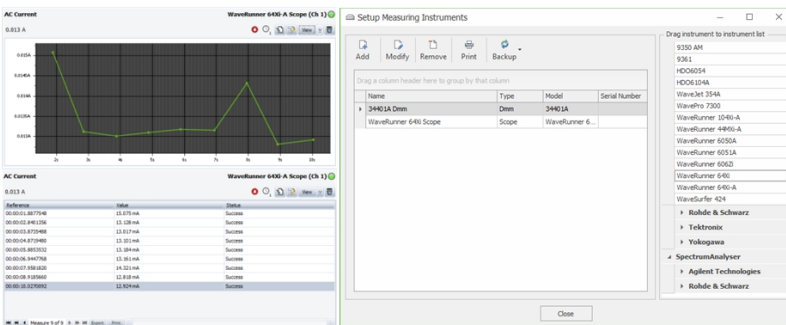
Most EMC standards require several tests to be performed on the same test object. With the Link Test feature it is possible to define customized test plans that consists of several individual tests. This ensures that all the required tests are performed and in the correct order.

Tests can be based on the standard library or customized users tests. This gives full flexibility to setup test plans that match your testing requirement.

Combined test reports can be generated by using the Report Manager.



With the Flow Chart Feature, a sequence of tests with decisions and dependencies can be programmed. This allows to automate tests and have an untrained user to follow a defined test plan. The benefit is guided testing for consistent and repeatable results. Flow chart sequences can be locked, saved and integrated in user tests or a custom library.



Many standards require the measurement of the signal that is applied to the EUT. With Compliance Test Studio, external measuring instruments (multimeters, oscilloscopes etc.) as well as measuring equipment (probes, sensors etc.) can be integrated. The software includes them as monitors, controls and triggers them and integrates measurement values and screenshots in the test results and test reports. This reduces the time for setup, testing and report generation.

Staying up to date with latest standards and tests is essential in the EMC business. We as AMETEK CTS are close to the industry, listen to customer feedback and are actively working in international and national standardization working groups. This ensures that the Compliance Test Studio includes always the latest and new standards, modified tests and new features. Our in-house software engineering provides regular software updates for your benefit.



**Minimum System Requirements**

Operating System	Windows 10 (64-bit) or Windows 11 (64-bit)
Processor	Intel Core i5 or AMD equivalent
Memory (RAM)	16 GB
Graphics	NVIDIA GeForce GTX 970 / AMD Radeon R9 290 or equivalent
Storage	10 GB of free space
Interfaces	USB, GPIB, Ethernet, OptoLink, depending on instrument
Supported devices	check application specific datasheet for list of supported devices

**Available Licenses**

License	Description
CTS.DeviceDPA	Enables the "device" mode to perform harmonics and flicker measurements with a DPA 50xN, one license required per device
CTS.DeviceNetPowerWave	Enables the "device" mode to remotely control the NetWave and PowerWave to program user tests, one license per connected device required, see application specific datasheet for details
CTS.DeviceRipple	Enables the Device Mode to remotely control the Ripple NX to program user tests, one license per connected device required, see application specific datasheet for details
CTS.ExtFunctions	Extended features including report, link, flowchart, measuring instruments, iteration, interlink, import and export of test data , requires a device license
CTS.EnhancedAnalysis	Enhanced analysis for harmonics and flicker measurements, deep insight in test data per time window, fluctuating/average harmonics, min-max values etc., requires a CTS.Harmonics and/or CTS.Flicker license
CTS.Industry	Library with pre-programmed tests for industry standards (IEC, GB, BS, DIN, etc.), the available standards depend on the used devices: e.g. IEC 61000-3-2/-12 harmonics and IEC 61000-3-3/-11 flicker in combination with a DPA 50xN, IEC 61000-4-13/-14/-28 etc. in combination with a NetWave/PowerWave, valid for all licensed devices, requires device license(s)
CTS.Automotive-INTL	Library with pre-programmed tests for automotive international standards (e.g. ISO), valid for all licensed devices
CTS.Automotive-MFR	Library with pre-programmed tests for automotive OEM/manufacture standards (e.g. Stellantis, Volkswagen, Mercedes, etc.), special licenses for Nissan and Renault on request, valid for all licensed devices
CTS.Automotive-H&F	Library with pre-programmed tests for harmonics and flicker automotive standards (e.g. ECE R10, IEC 61851, Stellantis, Volkswagen, Mercedes, etc.), special licenses for Nissan and Renault on request, valid with a CTS.DeviceDPA license
CTS.Aviation-INTL	Library with pre-programmed tests for aircraft standards (DO-160 D/E/F/G Section 16 and 18, ED-14G Section 16 and 18, GOST 19705-89, JIS W0812), valid for all licensed devices
CTS.Aviation-Airbus	Library with pre-programmed tests for Airbus aircraft standards ABD0100.1.2, ABD100.1.8, ABD0100.1.8.1, AMD-24, valid for all licensed devices
CTS.Aviation-Boeing	Library with pre-programmed tests for Boeing aircraft standards 787B3-147 and 7E7B3-147, valid for all licensed devices
CTS.Military	Library with pre-programmed tests for military standards (e.g. MIL-STD 461, MIL-STD 704), valid for all licensed devices within one system, requires a NetWave and a device license

