

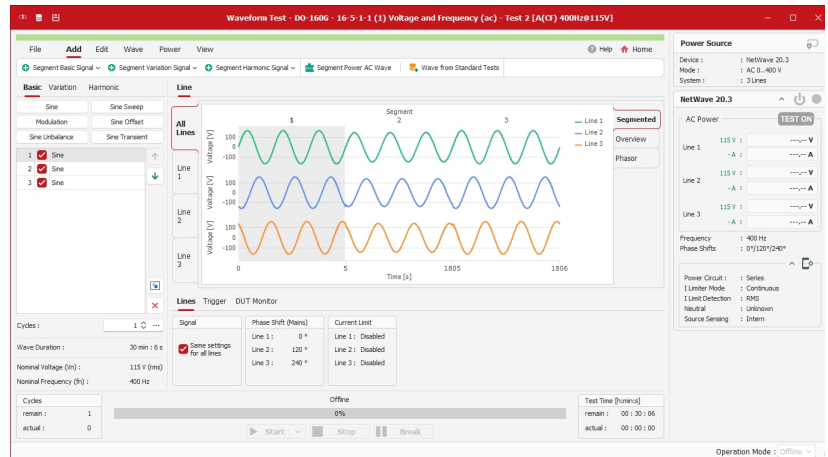


CTS 23 - Aviation Standards Testing Compliance Test Studio

Compliance Test Studio 23 for Aviation is a comprehensive and easy to use software to perform aviation tests with a NetWave with NWB power analyzer option and AMP 200N2. The extensive standards library includes pre-programmed tests for DO-160 Section 16 and 18, ED 14G, GOST 19705-89, JIS W0812, Boeing, Airbus and others. It is the ideal tool for compliance testing as well as tests part of the product development or validation process.

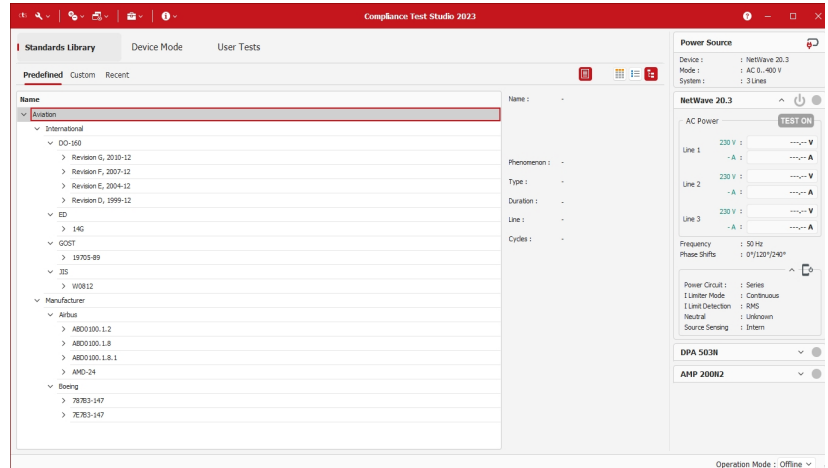
MAIN FEATURES

- Aviation power supply tests
- DO-160 Section 16 and 18
- Airbus and Boeing standards
- Large Library with pre-programmed tests
- integration of external instruments
- Report editor and generation



Efficient testing with Standards Library

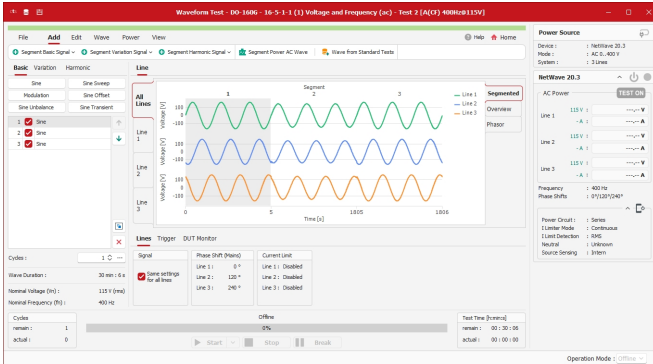
The extensive standards library includes more than 10'000 pre-programmed tests.



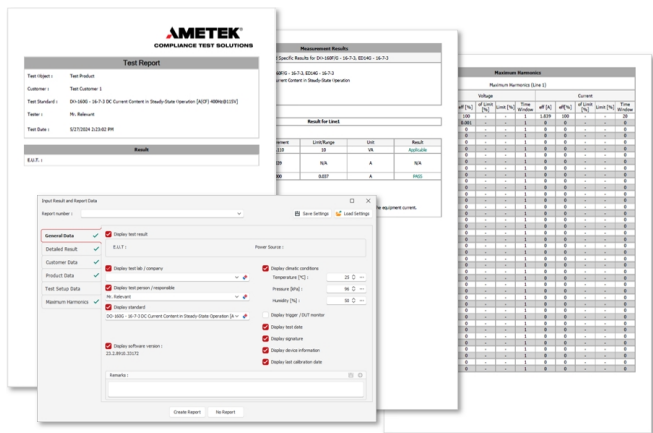
Tests cover voltage variations with a NetWave (swells, dips, frequency changes, unbalance etc.), power analyzer measurements with option NWB (current consumption, power, power factor, inrush current, harmonics emissions etc.) and audio frequency conducted susceptibility with an AMP 200N.

AMETEK CTS experts actively follow in international standardization work. This ensures that always the latest changes are implemented and newest versions of standards are available. Updates are regularly released to keep track with changes in standards, methods or test conditions.

Main Features and Functions

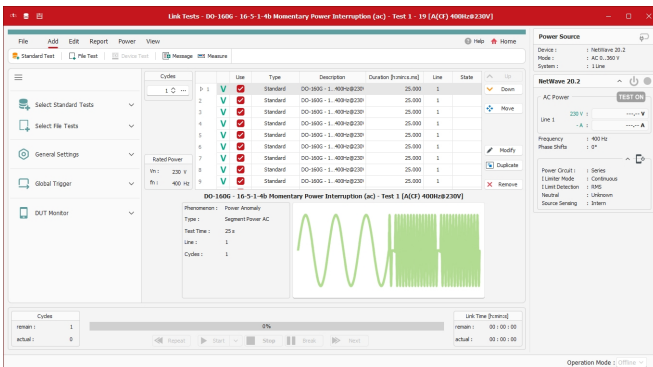


Unleash the full power of a NetWave power source, NWB power analyzer option and AMP 200Nx audio amplifier with the Compliance Test Studio 23 for aviation. The software supports you through the complete test procedure - from setup through testing to reporting. Test setup images help to correctly configure the required devices and accessories according to the standards. An integrated help is available to explain the possible settings. This allows also less experienced users to perform fully normative aviation tests according to DO-160 and other aviation standards.



Documentation is a required and important step in aviation testing. Compliance Test Studio supports with various functions for report generation: add customer information, test object data, test setup pictures and additional information. With the report editor the report content can be customized to create a meaningful report. Customize the test report template to include your company logo and address. Monitoring measurements and print screens of external instruments can also be added.

It is also possible to save the report within the Compliance Test Studio and reopen to modify. The report can be exported in various file formats which allows further processing and integration in overall test reports.



CTS.ExtFunctions license provides additional helpful tools to increase efficiency. Additional external instruments (e.g. multimeters, oscilloscopes, etc.) can be integrated and controlled by Compliance Test Studio software for monitoring and documentation of the applied signal and the EUT condition. The Link Test functions allows to compose complete test plans based on Standards Library and customized tests, combined with measurements from external instruments or react on EUT states via triggers. At the end, a combined test report for the complete test plan is created.

Available Licenses

License	Description
CTS.Aviation-INTL	Library with pre-programmed tests for aircraft standards (DO-160 D/E/F/G Section 16 and 18, ED-14G Section 16 and 18, GOST 19705-89, JIS W0812), valid for all licensed devices
CTS.Aviation-Airbus	Library with pre-programmed tests for Airbus aircraft standards ABD0100.1.2, ABD100.1.8, ABD0100.1.8.1, AMD-24, valid for all licensed devices
CTS.Aviation-Boeing	Library with pre-programmed tests for Boeing aircraft standards 787B3-147 and 7E7B3-147, valid for all licensed devices
CTS.ExtFunction	Extended features including report, link, flowchart, measuring instruments integration, iteration, interlink, import and export of test data, requires a device license

Supported Devices

Models	Supported Devices
	NetWave 7.3, all three phase NetWaves Opt-1 NWB and Opt-3 NWB measurement boards AMP 200Nx audio amplifiers

