



Basic Line, Basic Line·3D

2D/3D/360° stand-alone AOI system



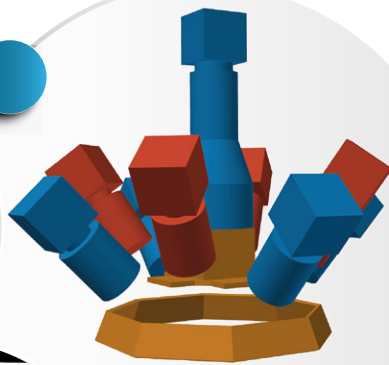
- flexible stand-alone AOI system with maximum fault detection through combined 3D/2D technologies
- automated AOI test program generation with MagicClick in combination with camera module 3D·ViewZ
- individual system integration in the manufacturing process through variable system configuration and data interfaces
- BasicLine·3D can be used for 3D solder paste inspection



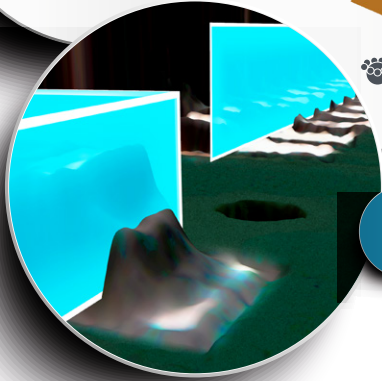
Technical specification

Basic Line, Basic Line·3D - 2D/3D/360° AOI system

Basic Line
2D/3D/360°
AOI system



3D·VIEWZ



Variable configurations

- camera module 3D·ViewZ, optional with angled view and rotation drive
- extended inspection area
- seated work position or standing work position

Maximum fault detection

- excellent image quality of orthogonal camera and angled-view cameras
- unique multi-spectral / multi-directional illumination
- 360° angled-view inspection with adapted focal plane

MES/Industry 4.0

- flexible data interface for MES and traceability
- data management and comprehensive fault analysis via PILOT Connect
- data import from third-party inspection systems for verification and evaluation



Inspection parameters	Data
2D orthogonal inspection	orthogonal camera with pixel adapted optics and telecentric lens image acquisition with up to 48 megapixel technology and 24 bit color depth
2D angled-view inspection	angled-view cameras with viewing angle of 45° and adapted focal plane up to 360 inspection directions image acquisition with up to 48 megapixel technology and 24 bit color depth for each camera
3D measurement	with camera module 3D·ViewZ technical data: see extra data sheet
x/y resolution (3D and 2D)	21 µm/10.5 µm
illumination	multi-spectral, multi-directional
component clearance above PCB	40 mm
component clearance below PCB	100 mm
inspection speed	up to 50 cm ² /s
inspection area	450 mm x 350 mm (500 mm optional)

System specifications	Data
power requirement	230 V AC / 1 kVA
dimensions (W x D x H)	1133 mm x 1142 mm x 1430 mm
weight	approx. 490 kg

Made in Germany

Accelonix BV

Luchthavenweg 18b • NL-5657 EB •
Eindhoven • The Netherlands •
T: +31 40 750 1650 • E: info@accelonix.nl



ISO 9001 certified

GÖPEL electronic GmbH

Goeschwitzer Str. 58/60
07745 Jena • Germany

+49 3641 · 6896 0 Phone
+49 3641 · 6896 944 Fax

sales@goepel.com
www.goepel.com

sales@goepel.co.uk

sales@goepelusa.com

sales@goepel.asia

sales@goepel.in